



VISITORS REGISTER TODAY

MEMBER ACCESS»

Search...



## SND MEMBERS

[Home](#) → [SND Members](#)

### MEMBER LOGIN

You are not currently logged in.

Username

Password

[LOGIN](#)
[Forgot?](#)
[Register](#)

### MEMBER PAGES

[→ Register for Membership](#)
[→ My Member Profile](#)
[→ Club Directory](#)
[→ Associate Members](#)
[→ Submit an Event](#)
[→ Printable Forms](#)
[→ Membership Payment](#)
[register for membership »](#)

#### Snowmobile North Dakota Membership Fees:

Individual/Family Memberships: **\$20.00**

Associate/Business Memberships: **\$31.00**

*Please note as of September 1, 2005 a \$1.00 of the membership fees will be donated to the organization hosting the annual Snowmobile North Dakota convention to cover expenses.*

#### Snowmobile North Dakota Membership Benefits

Please note the following list of benefits and opportunities Snowmobile North Dakota has to offer its members. If you are interested in becoming a member of Snowmobile North Dakota, please contact a local club and send the information to Snowmobile North Dakota at:

Snowmobile North Dakota  
1600 E Century Avenue, Suite 3  
Bismarck, ND 58503-0649

- [Get outdoors with Foremost, an Endorsed Insurance provider for SND.](#)
- Representation at governmental agencies
- Legislative lobbying.
- Sno-Dak News Subscription.
- Touring and trails information.
- The opportunity to take part in local, regional, statewide, and national events.
- Learning new areas for snowmobiling.
- The opportunity to gain knowledge about snowmobiling through club meetings and speakers.
- A feeling of belonging to a common bond of experience.
- Promote and understand safe snowmobiling.
- To protect and preserve the rights and freedoms to enjoy the sport.
- To assist in Search and Rescue missions.
- To help preserve and promote our natural habitat.
- Helping to provide groomed trails.
- The ability to enjoy snowmobiling as a family and at a reasonable cost.
- Helping to discourage bad snowmobiling practices.
- Assist in conducting youth safe driver education programs.
- Promote non-littering in the areas you ride.
- Calendar of events by club and state associations.
- Meeting new people and making new friends.
- Club membership provides recognition to members from state and federal agencies and prestige in that recognition.
- Free \$3,000 Accidental Death and Dismemberment insurance policy.  
(Applies to Individual and Family Memberships Only)

1.

register  
buttons

SNOWMOBILE  
**SND**  
NORTH DAKOTA

**VISITORS REGISTER TODAY**

**MEMBER ACCESS »**

Search...



2.

member  
register

## MEMBER REGISTRATION

[Home](#) → [SND Members](#) → [Member Registration](#)

### MEMBER LOGIN

You are not currently logged in.

Username

Password

[LOGIN](#) [Forgot?](#) [Register](#)

### MEMBER PAGES

→ [Register for Membership](#)

→ [My Member Profile](#)

→ [Club Directory](#)

→ [Associate Members](#)

→ [Submit an Event](#)

→ [Printable Forms](#)

→ [Membership Payment](#)

### New Users Registration

Choose a Username\*

First Name

Last Name

Email\*

Phone

Address 1

Address 2

City\*

State\*

Zip\*

Member Type\*

<---- Select One ---->



New or Renewal\*

<---- Select One ---->



Membership Package\*

<---- Select One ---->



Number in Family

You are not currently logged in.

Username

Password

[LOGIN](#) [Forgot?](#) [Register](#)

## MEMBER PAGES

→ [Register for Membership](#)

→ [My Member Profile](#)

→ [Club Directory](#)

→ [Associate Members](#)

→ [Submit an Event](#)

→ [Printable Forms](#)

→ [Membership Payment](#)

2.  
member  
register

## New Users Registration

Choose a Username\*

First Name

Last Name

Email\*

Phone

Address 1

Address 2

City\*

State\*

Zip\*

Member Type\*

New or Renewal\*

Membership Package\*

Number in Family

Business Name

Check to receive eNewsletter?

☒

Check to include your info in the member directory

☒

Local Snowmobile Club\*



Number in Family

SNOWMOBILE  
**SND**  
NORTH DAKOTA

VISITORS REGISTER TODAY

MEMBER ACCESS»

Search...



## MEMBER REGISTRATION

[Home](#) → [SND Members](#) → [Member Registration](#)

### MEMBER LOGIN

You are not currently logged in.

Username

Password

[LOGIN](#) [Forgot?](#) [Register](#)

### MEMBER PAGES

→ [Register for Membership](#)

→ [My Member Profile](#)

→ [Club Directory](#)

→ [Associate Members](#)

→ [Submit an Event](#)

→ [Printable Forms](#)

→ [Membership Payment](#)

Congratulations! Your registration was successful.

Your registration is being reviewed and you will be notified upon approval. Thanks.

### Existing Users Login

Username

Password

☐ Remember me

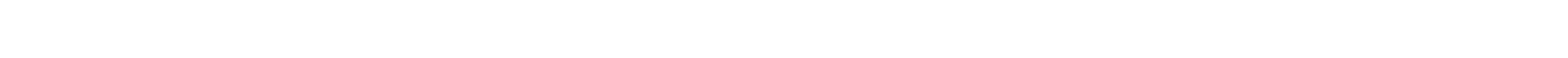
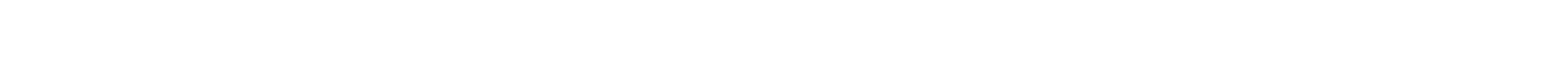
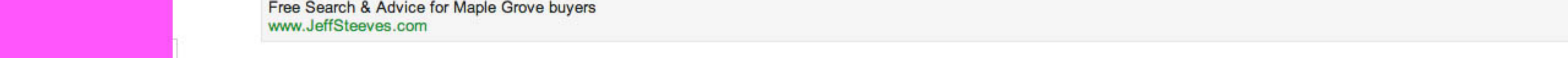
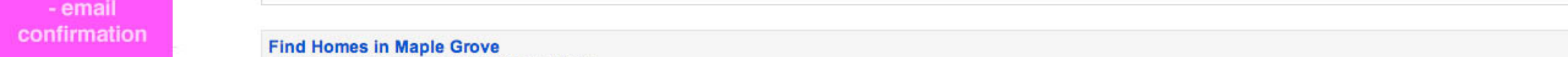
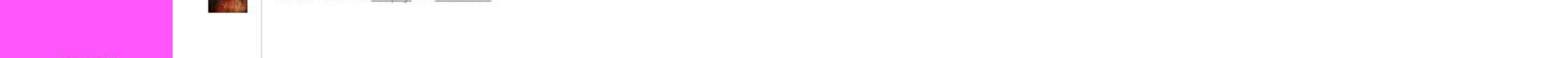
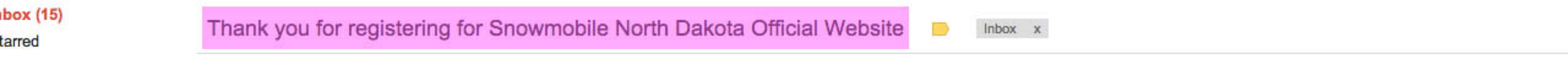
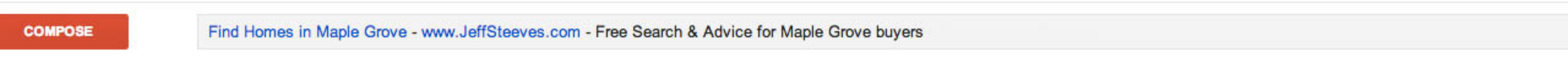
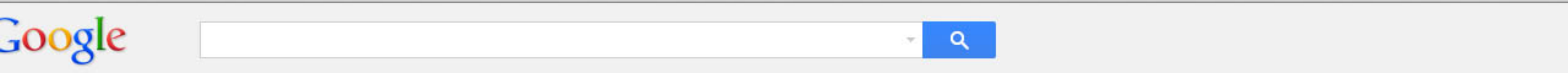
[LOGIN](#)

Forgot password? [Click here to reset](#)  
New User? [Click here to register](#)

3.

confirm  
account

- on site  
confirmation





Gmail



COMPOSE

Find Homes in Maple Grove - [www.JeffSteeves.com](http://www.JeffSteeves.com) - Free Search & Advice for Maple Grove buyers

Inbox (15)

starred

important

Your registration for Snowmobile North Dakota Official Website has been approved



Inbox x



**Snowmobile ND** via [gator3123@hostgator.com](mailto:gator3123@hostgator.com)

to me

Your registration for Snowmobile North Dakota Official Website has been approved.

Your registration information is below.  
You may wish to retain a copy for your records.

username: testuser1  
password: dox(1A7)h\$w\*

You may login and change your password here:  
<http://snowmobilend.org/member-profile/>

You originally registered at:  
<http://snowmobilend.org/snd-members/member-registration/>

-----  
This is an automated message from Snowmobile North Dakota Official Website  
Please do not reply to this address



Click here to [Reply](#) or [Forward](#)

4.

member  
approval

- email to  
user:  
approval  
message



**SNOWMOBILE  
SND  
NORTH DAKOTA**

**VISITORS REGISTER TODAY**

**MEMBER ACCESS »**



## SND MEMBERS

[Home](#) → [SND Members](#)

### MEMBER LOGIN

You are not currently logged in.

Username

Password

[LOGIN](#)

[Forgot?](#) [Register](#)

### MEMBER PAGES

→ [Register for Membership](#)

→ [My Member Profile](#)

→ [Club Directory](#)

→ [Associate Members](#)

→ [Submit an Event](#)

→ [Printable Forms](#)

→ [Membership Payment](#)

#### Snowmobile North Dakota Membership Fees:

Individual/Family Memberships: **\$20.00**

Associate/Business Memberships: **\$31.00**

*Please note as of September 1, 2005 a \$1.00 of the membership fees will be donated to the organization hosting the annual Snowmobile North Dakota convention to cover expenses.*

#### Snowmobile North Dakota Membership Benefits

Please note the following list of benefits and opportunities Snowmobile North Dakota has to offer its members. If you are interested in becoming a member of Snowmobile North Dakota, please contact a local club and send the information to Snowmobile North Dakota at:

Snowmobile North Dakota  
1600 E Century Avenue, Suite 3  
Bismarck, ND 58503-0649

- **Get outdoors with Foremost, an Endorsed Insurance provider for SND.**
- Representation at governmental agencies
- Legislative lobbying.
- Sno-Dak News Subscription.
- Touring and trails information.
- The opportunity to take part in local, regional, statewide, and national events.
- Learning new areas for snowmobiling.
- The opportunity to gain knowledge about snowmobiling through club meetings and speakers.
- A feeling of belonging to a common bond of experience.
- Promote and understand safe snowmobiling.
- To protect and preserve the rights and freedoms to enjoy the sport.
- To assist in Search and Rescue missions.
- To help preserve and promote our natural habitat.
- Helping to provide groomed trails.
- The ability to enjoy snowmobiling as a family and at a reasonable cost.
- Helping to discourage bad snowmobiling practices.
- Assist in conducting youth safe driver education programs.
- Promote non-littering in the areas you ride.
- Calendar of events by club and state associations.
- Meeting new people and making new friends.
- Club membership provides recognition to members from state and federal agencies and prestige in that recognition.
- Free \$3,000 Accidental Death and Dismemberment insurance policy.  
(Applies to Individual and Family Memberships Only)

5.

log in

user can  
now log in to  
site on the  
member  
page

[HOME](#) [TRAILS](#) [SAFETY](#) [NEWS](#) [EVENTS](#) [PARTNERS](#) [SND AWARDS](#) [ABOUT](#) [CONTACT](#) [MEMBERS](#)

**SNOWMOBILE**  
**SND**  
**NORTH DAKOTA**

**VISITORS REGISTER TODAY**

**MEMBER ACCESS »**

Search... →

## MEMBER REGISTRATION

[Home](#) → [SND Members](#) → [Member Registration](#)

### MEMBER LOGIN

You are logged in as testuser1  
[click here to logout](#)

You are logged in as testuser1

- [Click here to logout.](#)
- [Begin using the site.](#)

### MEMBER PAGES

- [Register for Membership](#)
- [My Member Profile](#)
- [Club Directory](#)
- [Associate Members](#)
- [Submit an Event](#)
- [Printable Forms](#)
- [Membership Payment](#)

6.

edit  
member  
info

[HOME](#) [TRAILS](#) [SAFETY](#) [NEWS](#) [EVENTS](#) [PARTNERS](#) [SND AWARDS](#) [ABOUT](#) [CONTACT](#) [MEMBERS](#)**SNOWMOBILE  
SND  
NORTH DAKOTA****VISITORS REGISTER TODAY****MEMBER ACCESS »**

Search...



## MEMBER PROFILE

[Home](#) → [SND Members](#) → [Member Profile](#)

### MEMBER LOGIN

You are logged in as testuser1  
[click here to logout](#)

- [Edit My Information](#)
- [Change Password](#)

### MEMBER PAGES

- [Register for Membership](#)
- [My Member Profile](#)
- [Club Directory](#)
- [Associate Members](#)
- [Submit an Event](#)
- [Printable Forms](#)
- [Membership Payment](#)

6.

edit  
member  
info

member can  
now change  
password or  
update  
member info